

Clinical Pathways: Women's Services

September 2014

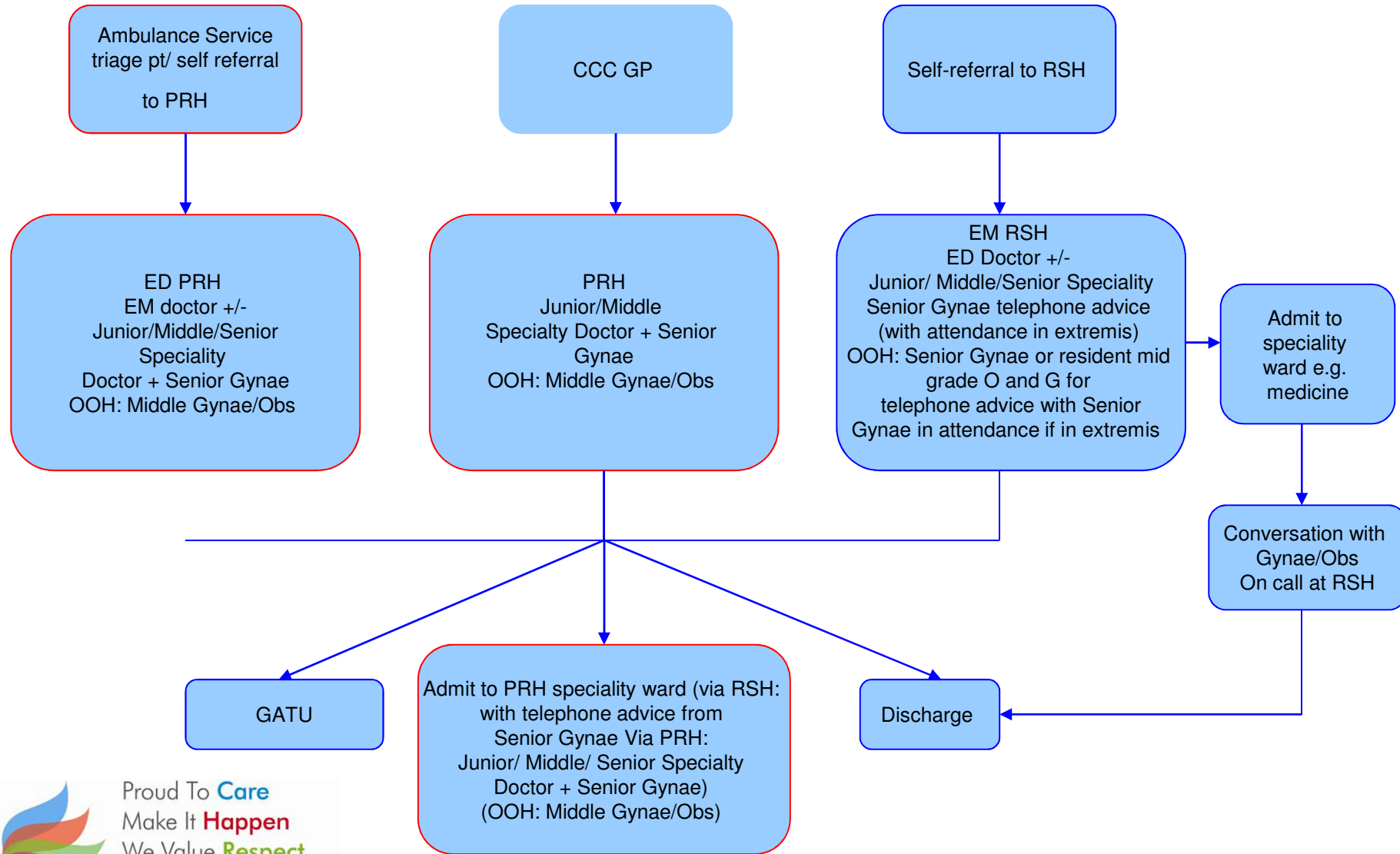


Proud To **Care**
Make It **Happen**
We Value **Respect**
Together We **Achieve**

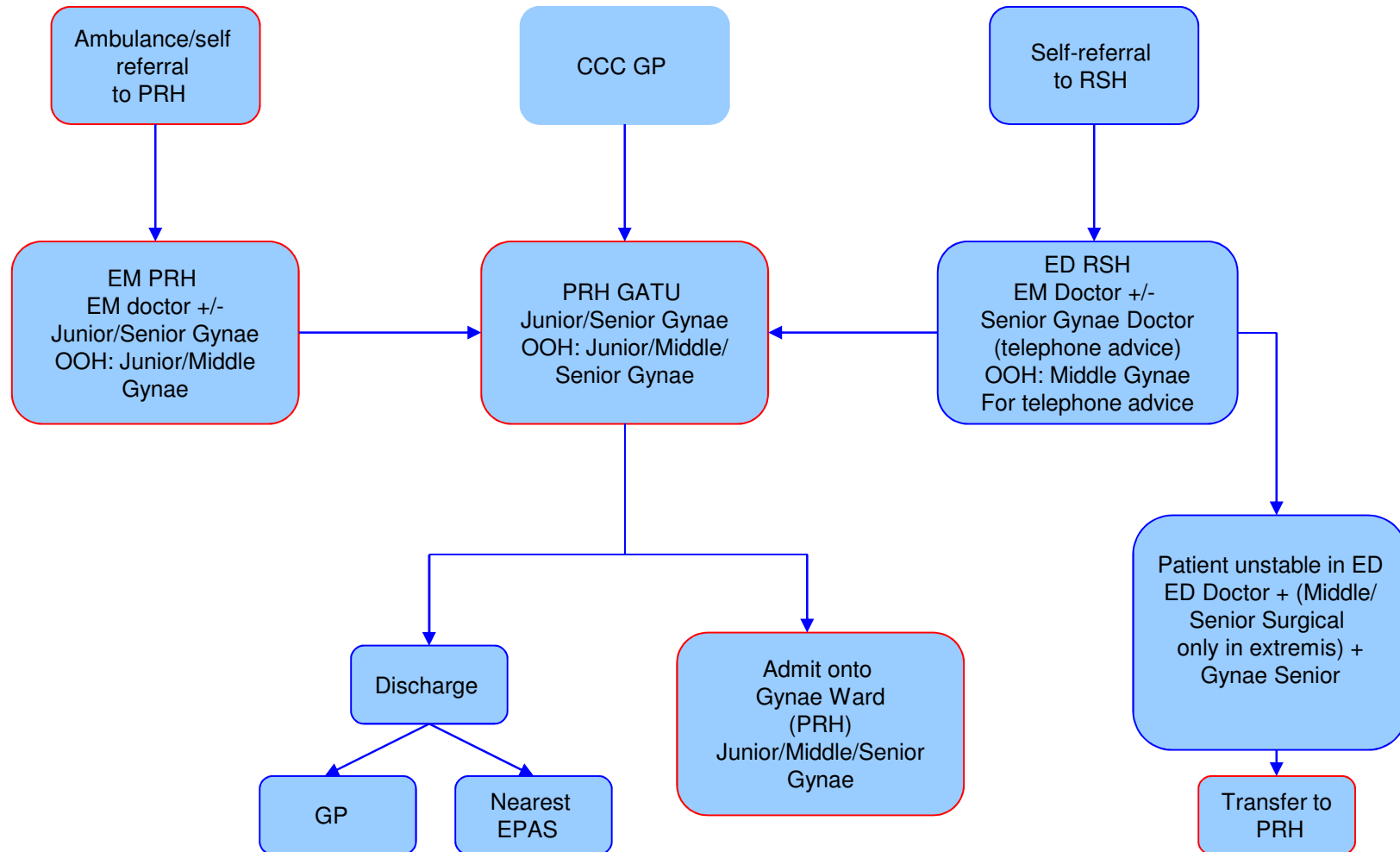
Contents

1.	Known Pregnant Female with Likely Non-Pregnancy Related Illness <16 weeks
2.	Known Pregnant female with Likely Pregnancy Related Illness < 16 weeks
3.	Non-pregnant Female (Adult) with likely Gynae Pathology (No pain)
4a.	Non-pregnant Female (Adult) with Low Abdominal Pain (part 1)
4b	Non-pregnant Female (Adult) with Low Abdominal Pain (part 2)
5.	Patients treated with Methotrexate
6.	RSH day case patients not fit for discharge
7.	Patient presenting to EPAS with Suspected Ectopic pregnancy and High Likelihood Suggested by USS
8.	Patient presenting to EPAS that has developed a heavy bleed

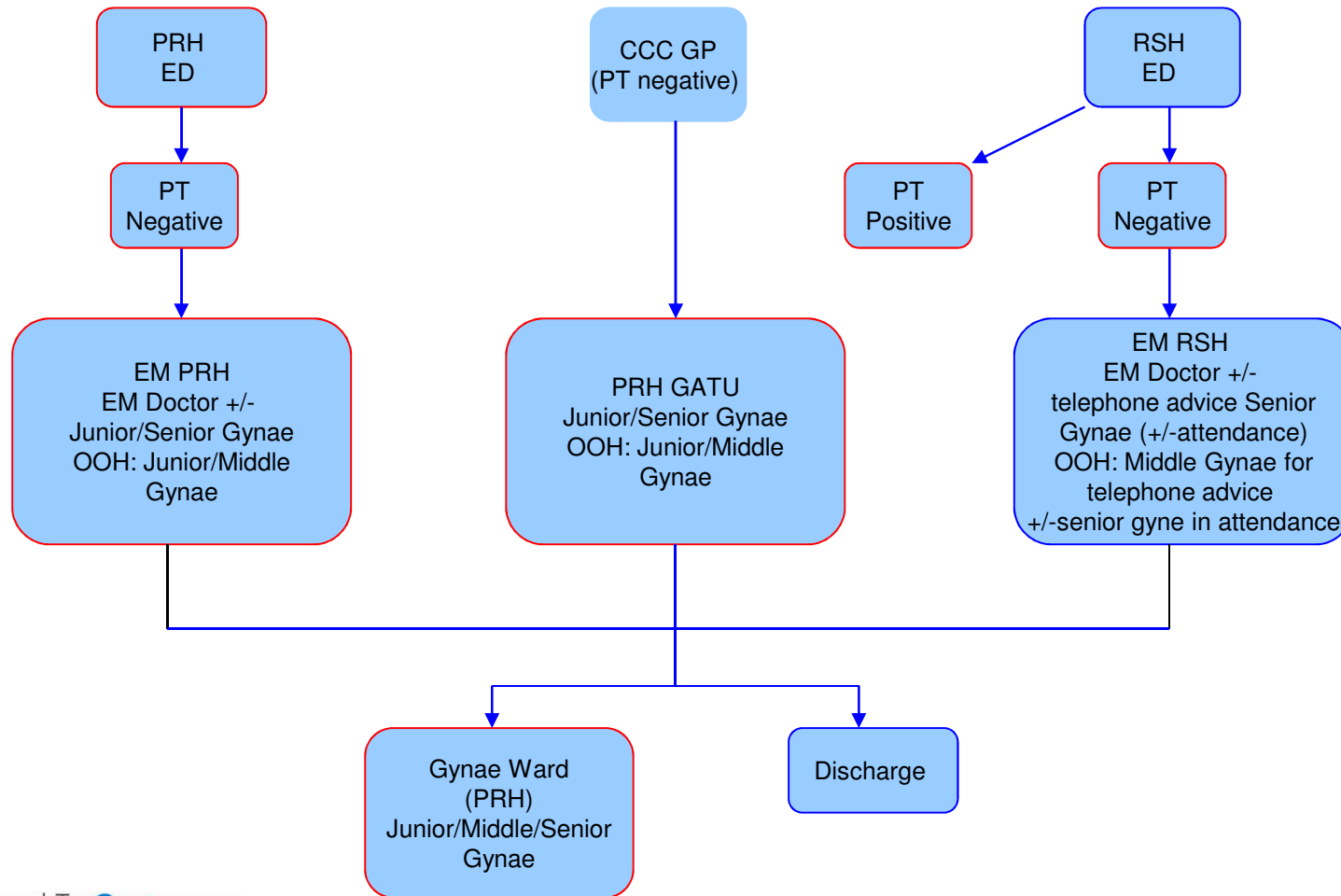
1. Known Pregnant Female with likely Non-Pregnancy Related Illness < 16 weeks



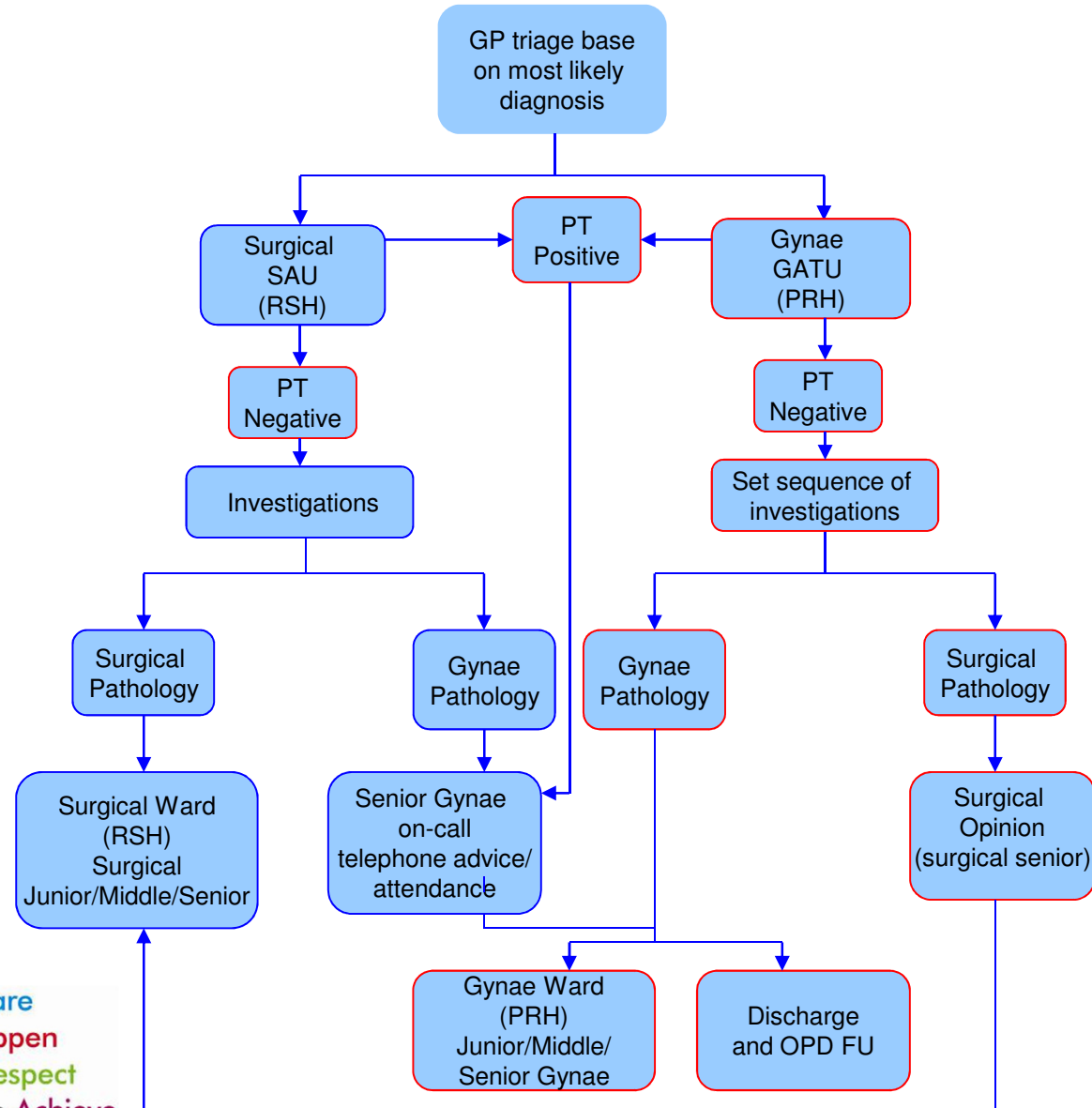
2. Known Pregnant female with likely Pregnancy Related Illness < 16 weeks



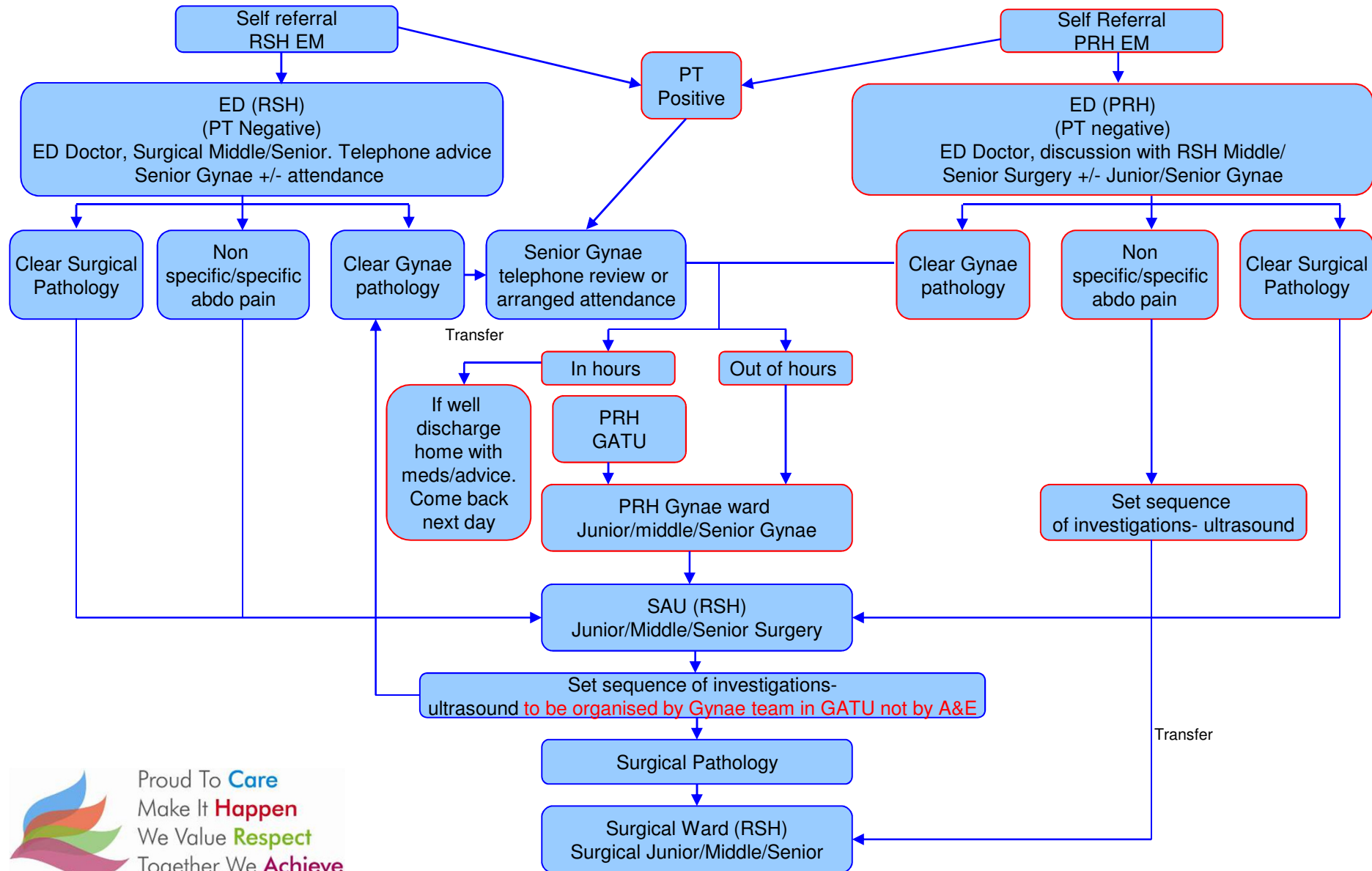
3. Non-pregnant female (Adult) with likely Gynae Pathology (No pain)



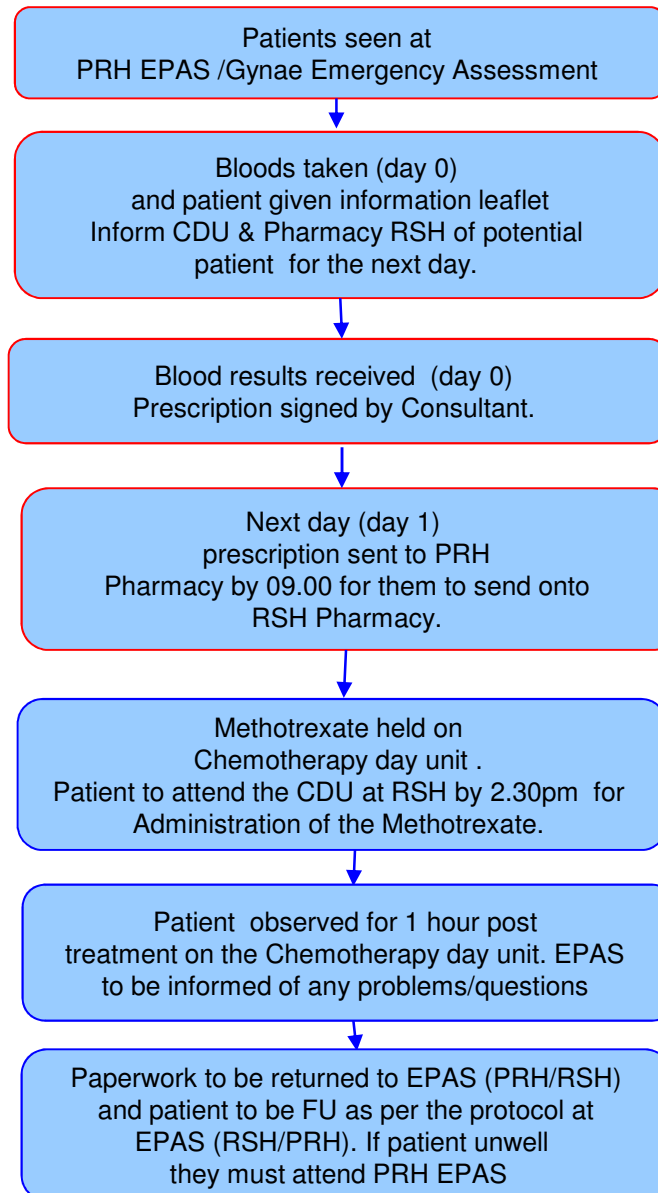
4a. Non-pregnant female (Adult) with Low Abdominal Pain (part 1)



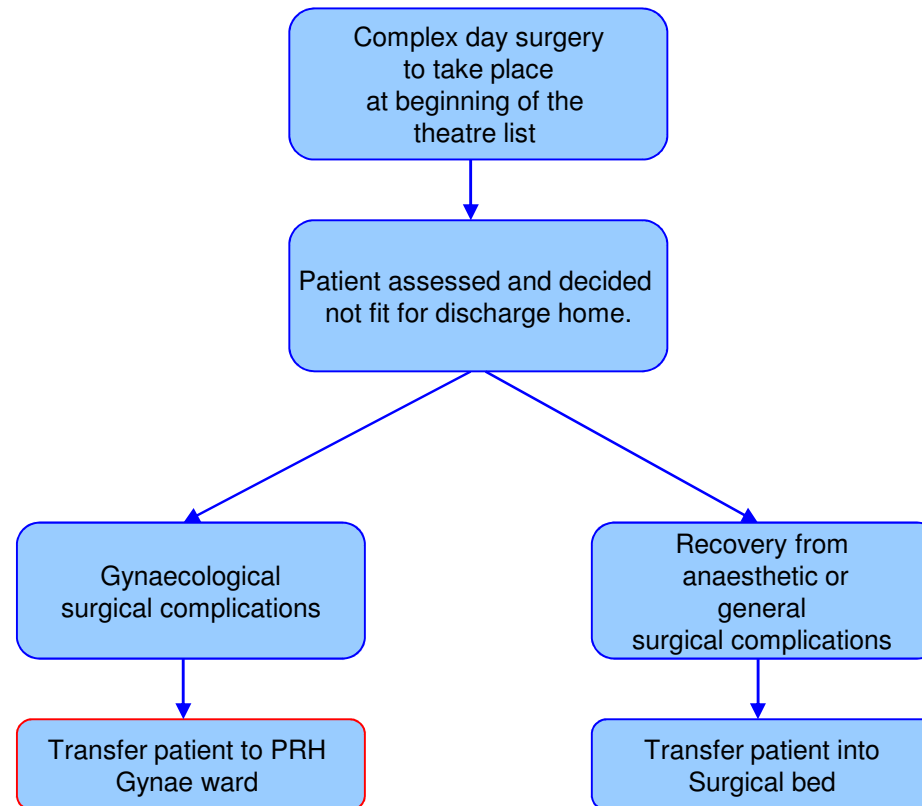
4b. Non-pregnant female (Adult) with Low Abdominal Pain (part 2)



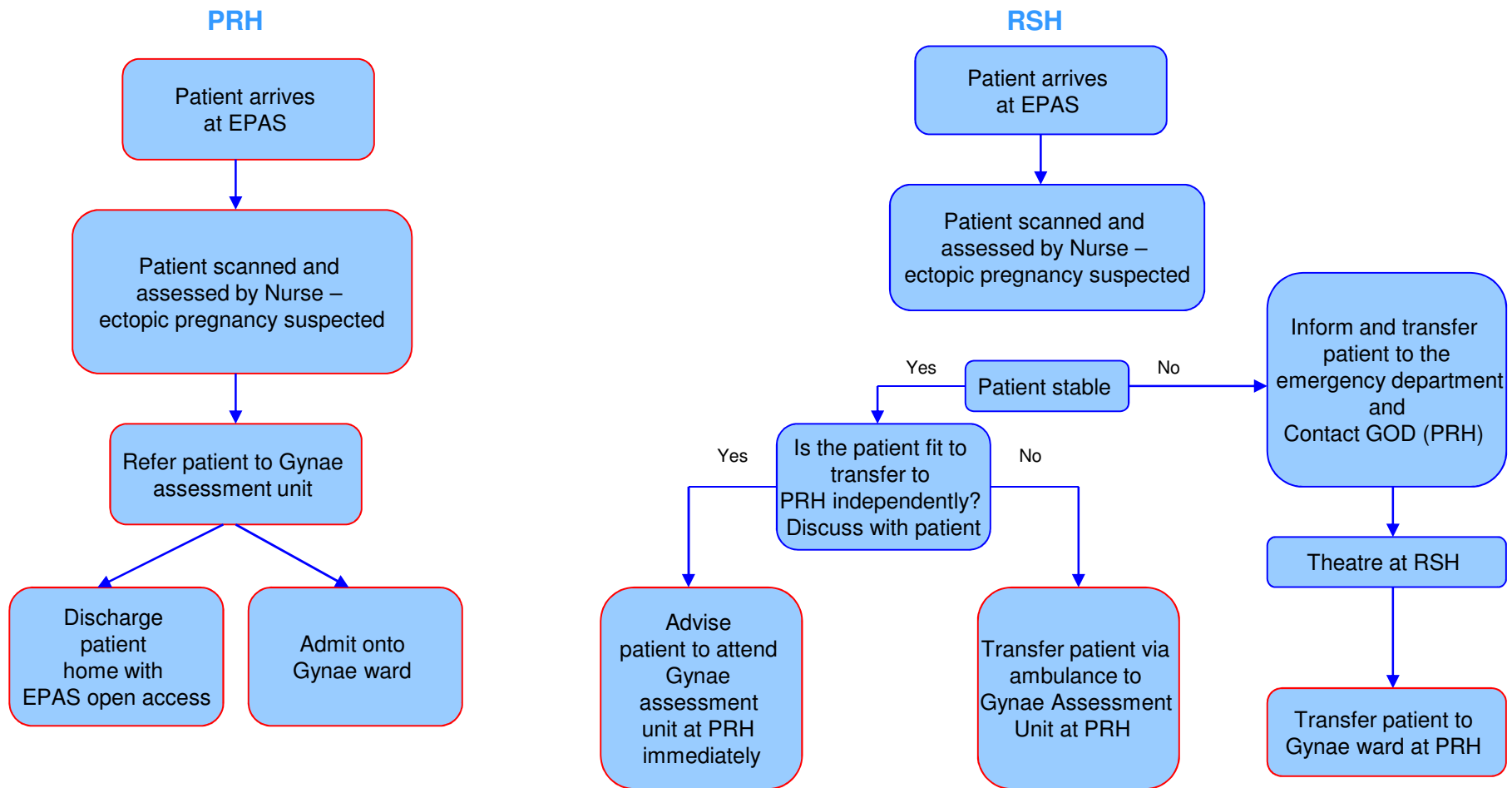
5. Patients treated with Methotrexate



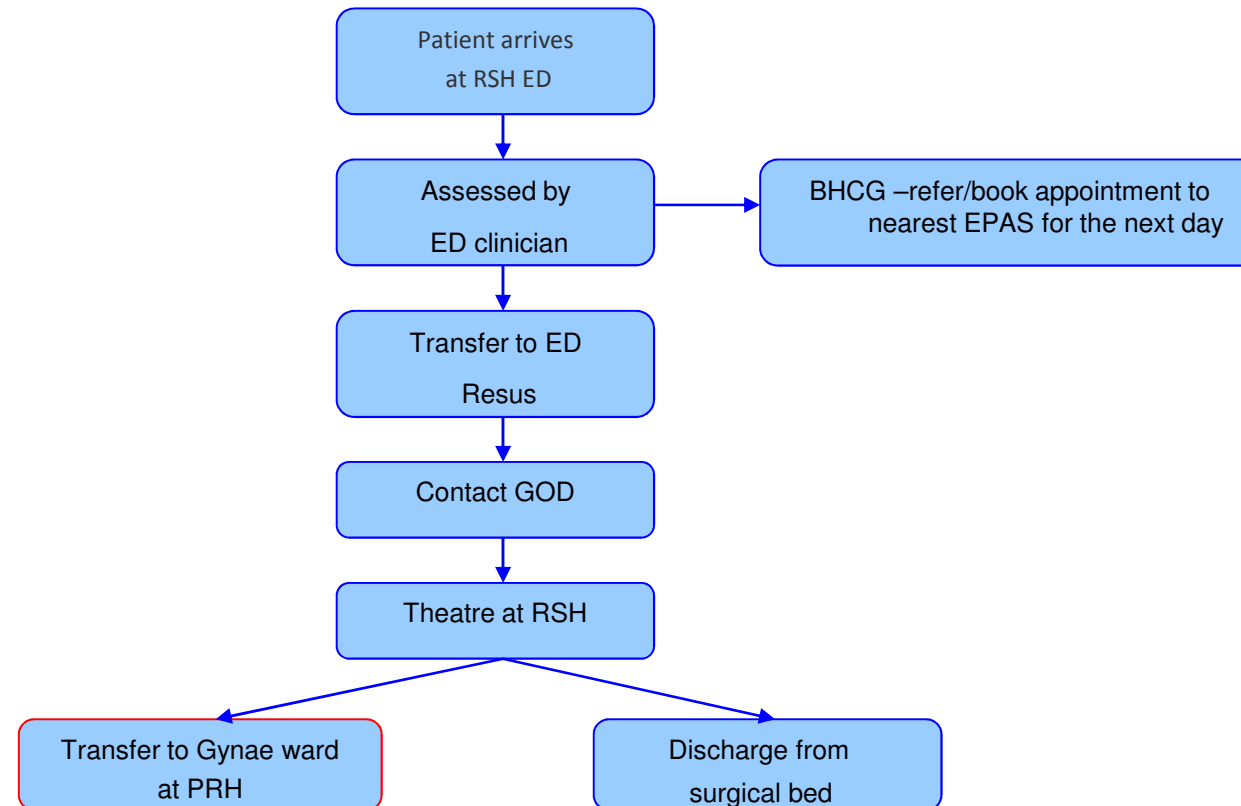
6. RSH day case patients not fit for discharge



7. Patient presenting to EPAS with Suspected Ectopic pregnancy and High Likelihood Suggested by USS



7a. Patient presenting at RSH (out of hours) with Suspected Ectopic pregnancy



8. Patient presenting to EPAS that has developed a heavy bleed

