



# Shropshire, Telford & Wrekin

Sustainability and Transformation Partnership

## STW STP Long Term Plan: An Overview

September 2019

***In Development***

# Developing ST&W STP's Long Term Plan

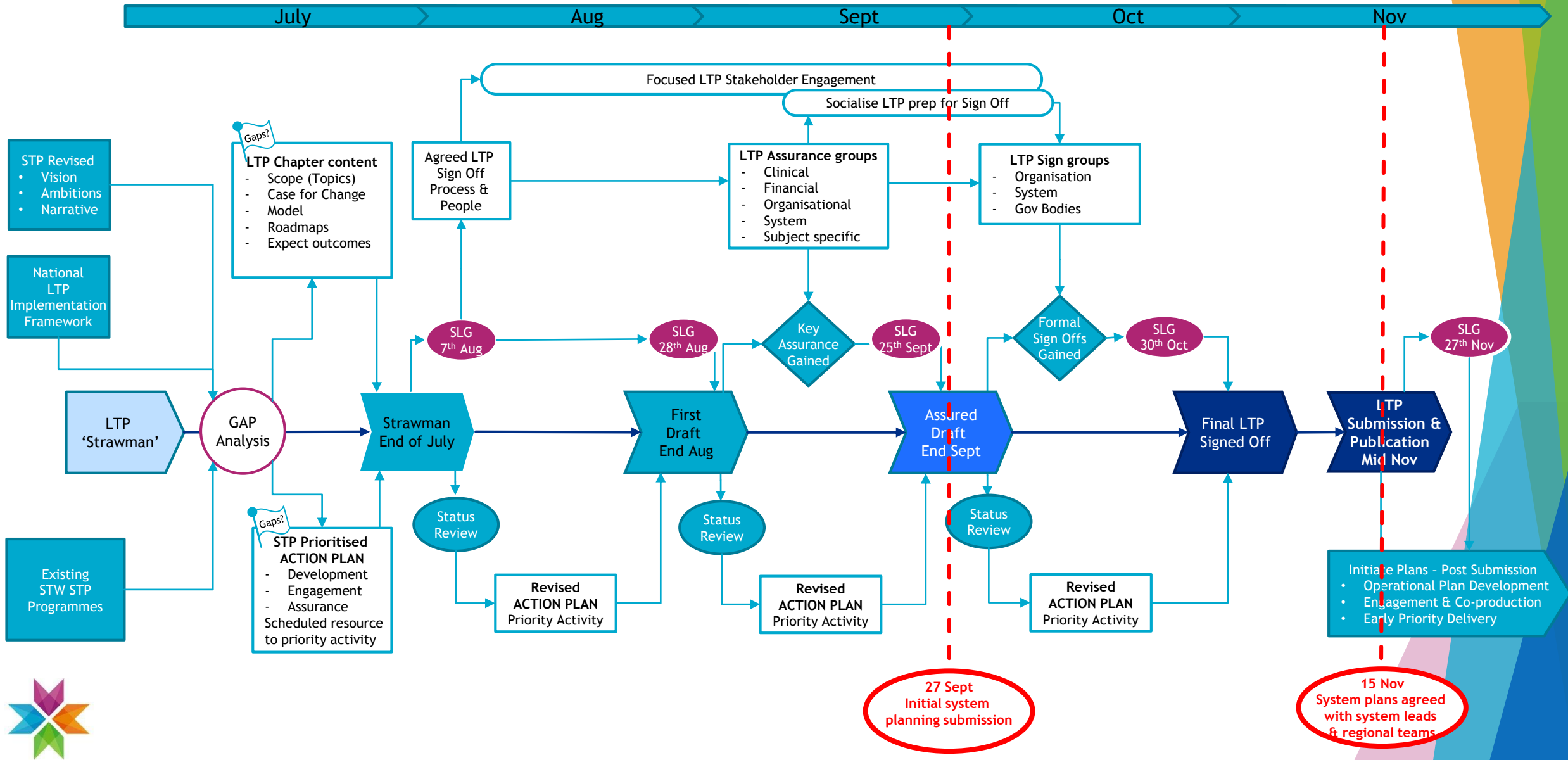
- ▶ Our one system plan will describe how all partners within the STP will work together locally to ensure current and future health and care needs are met. It will describe how the STP will deliver its agreed priorities and the requirements of NHS Long Term Plan Implementation Framework.
- ▶ The Long Term Implementation Framework expects ICSs and STPs to develop and publish their five year plans according to the following timetable:

<b>By 27 September 2019</b>	Initial submission of ST&W STP draft plan to NHSE/NHSI Midlands Team
<b>By 15 November 2019</b>	STP plan agreed with Senior Leadership Group and NHSE/NHSI Midlands team
<b>November onwards</b>	Local delivery plans to be developed

- ▶ Currently our ST&W STP Long Term Plan is DRAFT and will continue to evolve and change based on the feedback and views gathered across the system.



# LTP Document Development & Sign-off Process



# HWBB involvement in the development of STW LTP

- ▶ Audit of stakeholder engagement delivered to date and planned for future (including Shropshire, Telford & Wrekin Council's engagement)
- ▶ STP and Long Term Plan updates presented at the HWBB
- ▶ Council Councillors / Staff / VCS engagement on the NHS Long Term Plan via survey (August)
- ▶ HWB Board Member involvement in the development of the ST&W LTP:
  - ▶ Senior Leadership Group (SLG)
  - ▶ Healthwatch ST&W STP LTP Report
  - ▶ VCS ST&W STP LTP Engagement Event
  - ▶ Population Health Management and Business Intelligence (Chapter 2 of ST&W LTP)
  - ▶ Prevention & Place Based Care Cluster (Chapter 3 of ST&W LTP)
  - ▶ Telford & Wrekin Place (Chapter 3 of ST&W LTP)
  - ▶ Acute Care Development Cluster (Chapter 5 of ST&W LTP)



# Long Term Plan - Draft Content

Chapter 1: Our System Structure and Governance to support delivery of change

Chapter 2: What underpins our ambitions

Chapter 3: Delivering a new service model for Prevention and Place based integrated care

Chapter 4: Delivery of world class Mental Health services

Chapter 5: Acute Care Development

Chapter 6: Support Services

Chapter 7: A comprehensive new Workforce plan

Chapter 8: Digital Enabled Care

Chapter 9: Estates

Chapter 10: Financial Sustainability & Productivity

Chapter 11: Next Steps – New Ways of Working



# Our System Structure and Governance to support delivery of change

## Our vision

We will work together with the people of Shropshire, Telford and Wrekin to develop innovative, safe and high quality services delivering world class care that meets our current, and future, rural and urban needs.

We will support people – in their own communities – to live healthy and independent lives, helping them to stay well for as long as possible.

As the world faces up to a climate emergency, we are committed to delivering an internationally recognised system known for its environmentally friendly services that make the best use of our resources.



# *Together as one, transforming health and care for Shropshire, Telford & Wrekin*

- ▶ Shropshire, Telford & Wrekin's Sustainability and Transformation Partnership (STP) brings together health and social care organisations across the county
- ▶ Working more closely than ever before to transform health and care services to deliver world class care which meet current and future needs of our rural and urban populations
- ▶ We want all our residents in Shropshire, Telford and Wrekin - children, adults of working age, and older people, to live in good health for as long as possible throughout their life
- ▶ We will help them to live independent lives with a greater emphasis on preventing illness and staying well, but also providing the right care when and where they need it
- ▶ By joining up local services and working in collaboration with local people and our voluntary sector, we can achieve much greater benefits for our community



# *Together as one, transforming health and care for Shropshire, Telford & Wrekin*

- ▶ Together we need to tackle the cause of the problems such as loneliness, poverty and obesity, and work differently so that services are joined up, making the most of new digital technology and using buildings that are fit for modern day health and care
- ▶ We need to do more to support people lead happier and healthier lifestyles by encouraging people to be more physically active, manage their weight or change habits such as stop smoking or alcohol abuse
- ▶ We need to reduce the growing demand on our services, staff and resources, making it easier for people to get an appointment, as some are waiting longer than we would like for treatment, and some are spending longer in hospital than they need to
- ▶ By working together, we can tackle some of the big problems we are facing, and can share skills, resources and money and give a better service to everyone, no matter where they live in Shropshire, Telford and Wrekin.





# Together as one we will:

- ▶ Provide a greater emphasis on prevention and self-care
- ▶ Help people to stay at home with the right support with fewer people needing to go into hospital
- ▶ Give people better health information and making sure everyone gets the same high quality care
- ▶ Utilise developing technologies to fuel innovation, support people to stay independent and manage their conditions
- ▶ Attract, develop and retain world class staff
- ▶ Involve and engage our staff, local partners, carers, the voluntary sector and residents in the planning and shaping of future services
- ▶ Develop an environmentally friendly health and care system



# ST&W LTP - Sign off approach

- Key groups to achieve sign off by 15<sup>th</sup> November

	Groups	Engage	Develop/ Input	Scrutiny	Sign Off	Approve
	Commissioning Governing Bodies	8&9 Oct				12&13 Nov
	Provider Governing Bodies	26 Sept				31 Oct
	STP Chairs Group	25 Sept				
	Telford & Wrekin H&WBB	26 Sept	TBC			
	Shrop H&WBB	12 Sept	22 Oct			
	Joint HOSC			2 Oct		
	Senior Leadership Group	Sept -	- Oct		30 Oct	
	Workstream SRO - LTP Chapter	Sept -	- Oct		24 Oct	

