

**EXPRESSIONS OF INTEREST ARE SOUGHT FOR A GP WITH SPECIAL INTEREST IN SUSPECTED
BUT NON-SPECIFIC VAGUE SYMPTOMS OF CANCER:**

The Shrewsbury & Telford Hospitals NHS Trust (SaTH) and Shropshire, Telford & Wrekin Clinical Commissioning Group are seeking to establish a new pathway for urgent referrals for patients with suspected but non-specific symptoms of cancer. This is an exciting and innovative venture which will build on the success of a pilot of a 'vague symptoms' pathway which ran for 9 months in 2017. We are seeking a GP with an interest in this area to lead and deliver this pathway in partnership with SaTH. This will be on a 0.2WTE basis so a commitment of 2 sessions a week hosted at SaTH. This is for a period of 12 months initially. Additional CNS, Admin and Cancer Care Navigator support will also be provided to help deliver the service and support the patients.

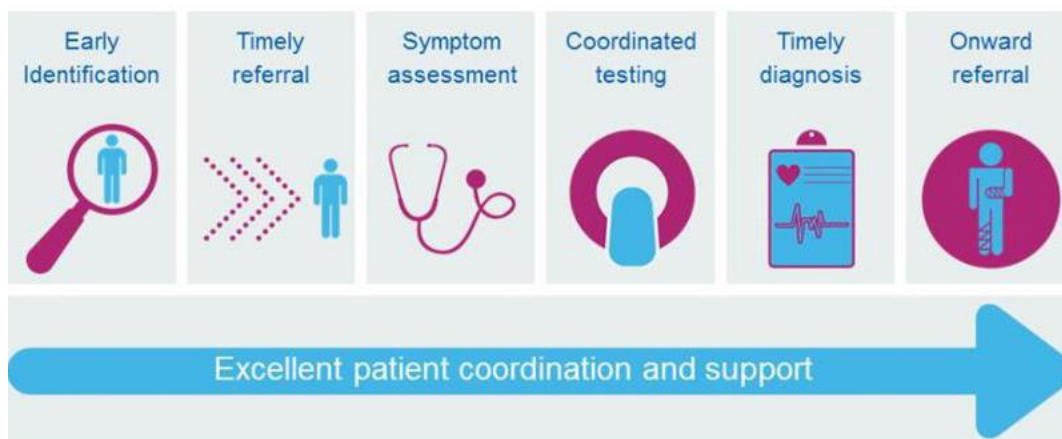
BACKGROUND

This is a five year programme based on Cancer taskforce ambitions:

- Fewer people getting avoidable cancers
- More people surviving cancer for longer after a diagnosis
- More people having a positive experience of care and support
- More people having a better long term quality of life

The pathway is not designed to compete with or replace the established two week wait pathways for patients with symptoms suspected of cancer within a certain tumour site. The term 'vague' refers to serious but not specific symptoms of cancer. These include weight loss, non-specific abdominal pain, nausea/ loss of appetite, sweats of unexplained aetiology, fatigue or a 'gut feeling'. Some of these symptoms or combinations of symptoms can have a number of causes and can also be symptoms of several types of cancer. The time to diagnosis can be improved for patients with non-specific symptoms that do not currently meet the criteria for site specific urgent two week wait referrals. The aim of this pathway and service is therefore to provide an alternative to referring patients via A&E, AMU & SAU where the patient is well enough to attend a clinic appointment and to provide a better patient and GP experience with faster access to relevant diagnostic tests and procedures.

Other key outcomes of the service will be to deliver the 7 principles set out by rapid diagnostic services:



This proposal is a great example of integrated care in practice.

THE NEXT STEPS

If you as a practice are interested in taking on the Vague Symptoms Lead role then please submit an expression of interest to Jessica Greenwood (Strategic Lead for Cancer STW CCG) via the email addresses Jessica.greenwood2@nhs.net or to discuss the pathway in more detail please call Dr Steve McKew via the Switchboard at SaTH (01743261000).

Deadline for submissions: 6th August 2021

Pathway commencement date: 4th October 2021