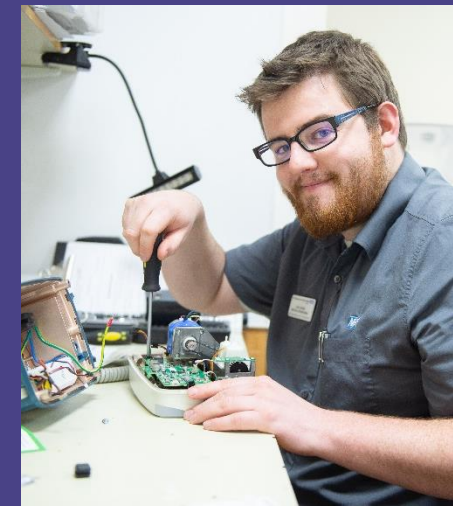


Hospital Transformation Programme

Update to Hadley, Leegomery
and Apley Parish Council

4 July 2023



Why are we here?

- An introduction to the Hospitals Transformation Programme
- Where are we in the process?
- Latest developments
- Responding to your questions
- Involving and informing you on the next steps and what this means for services
- Questions

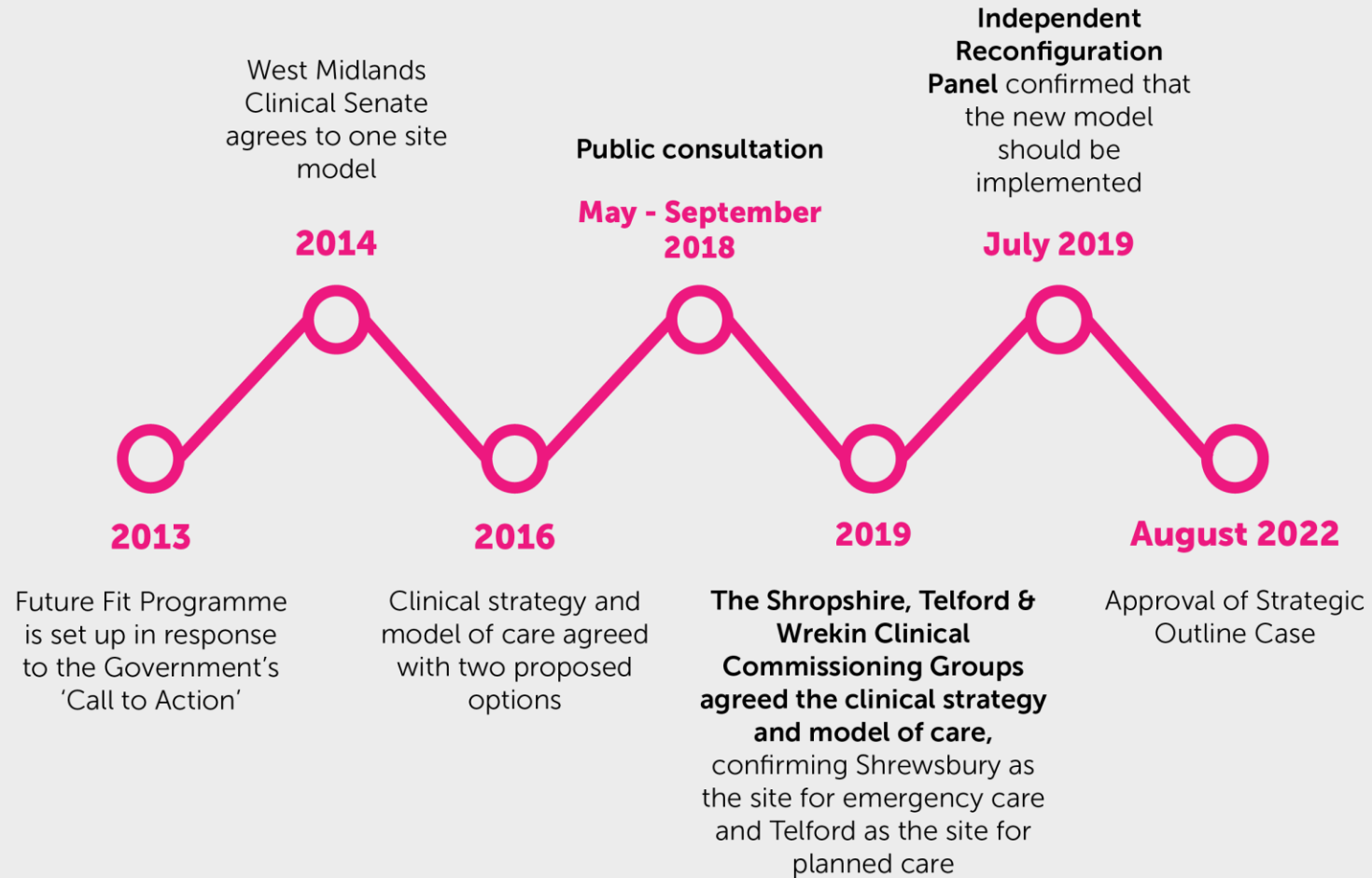
Dr Ed Rysdale, Consultant in Emergency Medicine and Clinical Director for the Hospitals Transformation Programme

Nigel Lee, Interim Director of Strategy and Partnerships

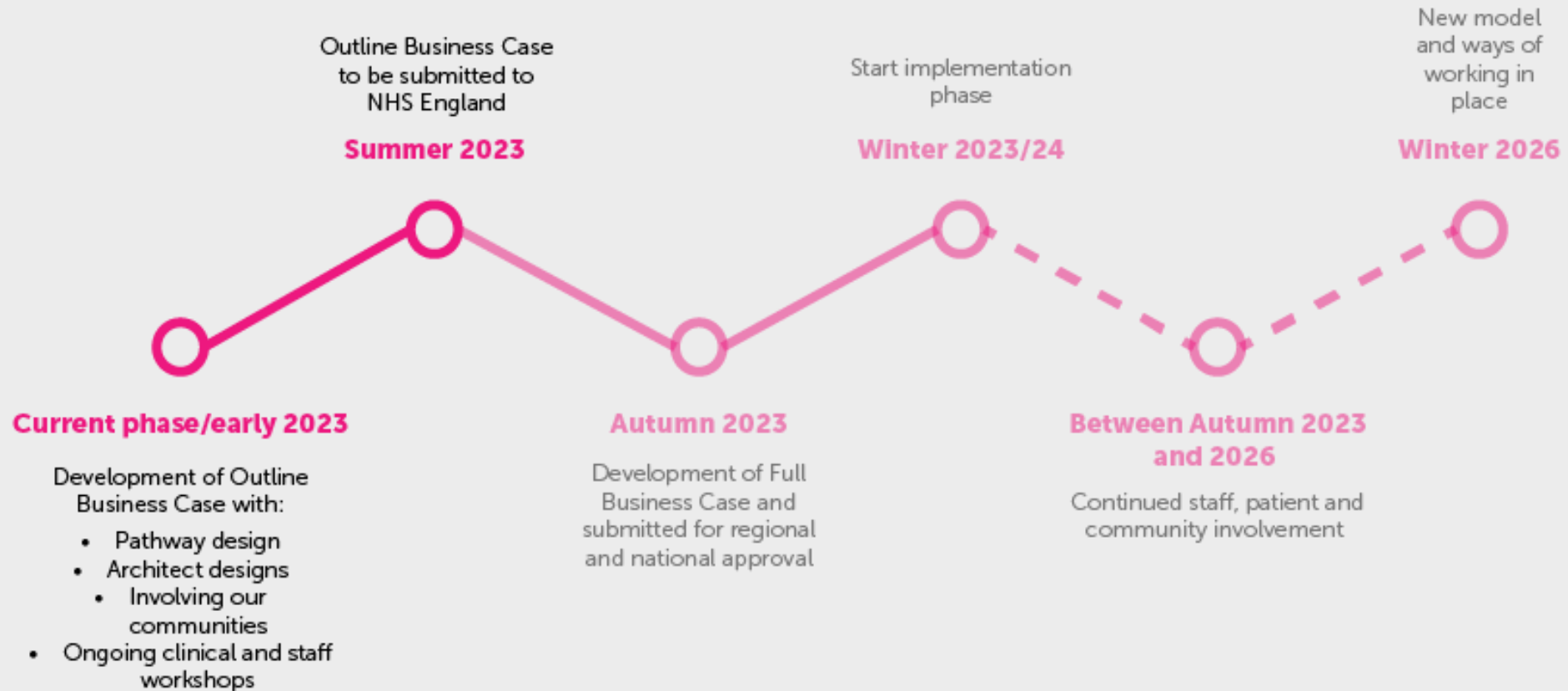
Julia Clarke, Director of Public Participation



Our journey so far



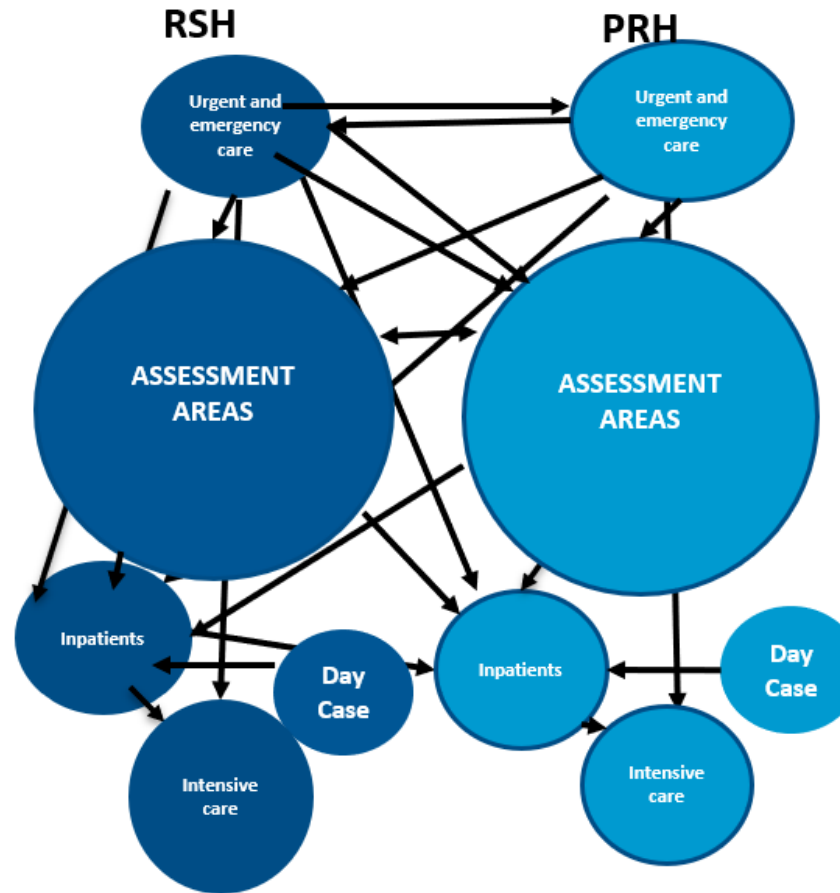
Where are we in the process?



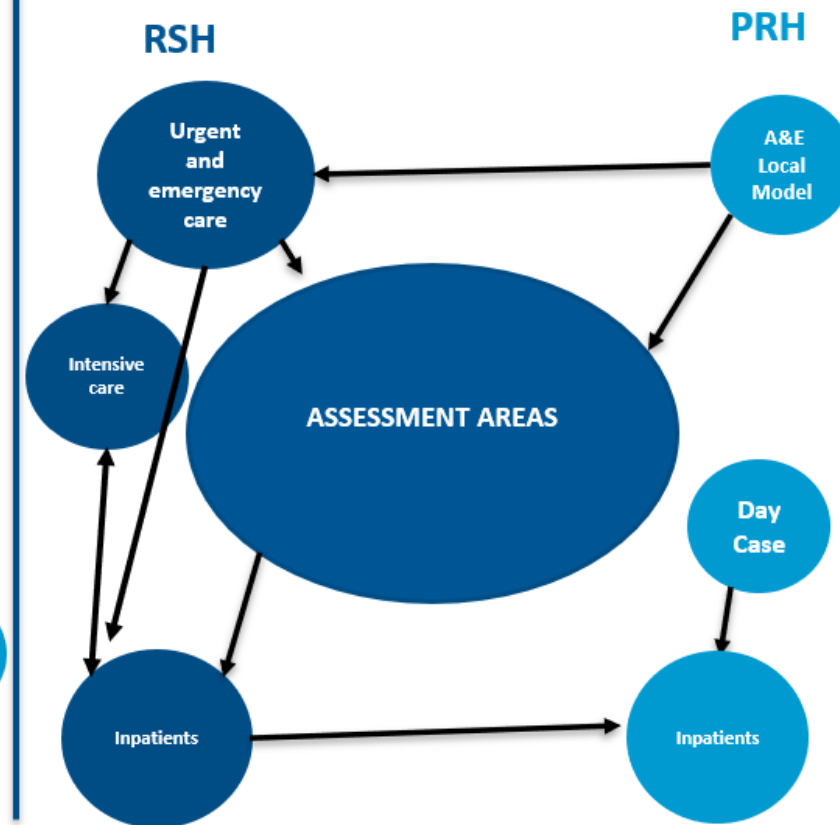
Why is this the right thing to do?

- The clinical model has been developed and delivered by the clinicians who work in the services providing care to local people
- It is informed by the feedback we have received from local patients
- Services will be more resilient to seasonal and future pressures
- Greater opportunities to attract and retain the best staff
- It provides improved care for all the communities we serve

Current Patient Flow



Future Patient Flow



Excellent care, in the right place, at the right time, from the right people



Dedicated Emergency Department with immediate access to medical and surgical specialities

Timely access to the right specialist consultants

Eliminate 12-hour breaches and reduced ambulance waiting times

Shorter hospital stays



Ring-fenced planned care capacity supporting the needs of our population

Fewer procedures cancelled

Improved cancer waiting times

Resilient to peaks in emergency demand



Improved care for everyone

Modern, well-designed facilities

A better experience of care

Positive impact on staff experience



Integrated services for local people

Simpler and more effective patient pathways

Working seamlessly with our health and social care partners

Alleviating the burden on Primary Care caused by planned care delays



The clinically led changes will deliver...



**Integrated
Care System**
Shropshire, Telford and Wrekin

NHS
The Shrewsbury and
Telford Hospital
NHS Trust

TELFORD
SPECIALISING IN PLANNED CARE

SHREWSBURY
SPECIALISING IN EMERGENCY CARE

ONE HOSPITAL, TWO SITES

BOTH SITES WILL PROVIDE

PLANNED SURGERY: PROCEDURES, DAYCARE SURGERY,
NON-COMPLEX INPATIENT SURGERY

A&E LOCAL MODEL

INPATIENT MEDICAL CARE

GENERAL SURGERY

UROLOGY

ORTHOPAEDICS

GYNAECOLOGY

WEIGHT LOSS SURGERY

BREAST SURGERY

REHABILITATION

24-HOUR URGENT CARE CENTRES

DIAGNOSTICS

OUTPATIENT ADULT

OUTPATIENT CHILDREN

MIDWIFE-LED MATERNITY SERVICES

FRAIL AND ELDERLY CARE SERVICES

DIAGNOSTIC ENDOSCOPY

DAY CASE CHEMOTHERAPY

EMERGENCY DEPARTMENT

CRITICAL CARE UNIT

CONSULTANT-LED MATERNITY CARE

CHILDREN'S INPATIENT SERVICES

EMERGENCY SURGERY

COMPLEX PLANNED AND CHILDREN'S SURGERY

EMERGENCY MEDICINE INCLUDING CARDIOLOGY,
STROKE, RESPIRATORY, AND ACUTE MEDICINE

CHILDREN'S ASSESSMENT UNIT

CONSULTANT NEONATAL SERVICES

RADIOTHERAPY AND INPATIENT CANCER CARE

HEAD AND NECK INPATIENT SERVICES

Latest developments: Princess Royal Hospital



**Integrated
Care System**
Shropshire, Telford and Wrekin

NHS
The Shrewsbury and
Telford Hospital
NHS Trust



- ✓ Diagnostic endoscopy
- ✓ Vibrant planned care site with medical and surgical inpatients on a planned pathway of care
- ✓ Adult and child outpatient services
- ✓ Day case surgery centre
- ✓ Midwife-led maternity unit
- ✓ 24 hour Urgent Treatment Centre (A&E Local model) with co-located Same Day Emergency Care (SDEC)
- ✓ Procedure site for local anaesthetics
- ✓ Enhanced rehab facilities and two new therapy wards
- ✓ Respiratory day case unit
- ✓ Chemotherapy day case unit
- ✓ £1.2million on additional ambulance pods
- ✓ Corresponding retail offer and brand new multi-million front entrance

**HOSPITALS
TRANSFORMATION
PROGRAMME**



HIGHER QUALITY,
SAFER CARE



IMPROVED
OUTCOMES



BETTER
ACCESS



A GREAT PLACE
TO WORK

Latest developments: Princess Royal Hospital

Work is progressing on the multi-million pound transformation of the Main Entrance at PRH and there are plans for the development of a Chemotherapy day case unit.



The development of the main entrance will transform the ‘front door’ of the hospital, with an improved reception, better access and wayfinding for patients. The investment will also provide increased retail space offering greater comfort and refreshments to people visiting the site. It is expected to be completed later this year.

A Chemotherapy day case unit for patients who live in and around Telford and Wrekin will allow them to receive their treatment closer to home when clinically appropriate, improve their clinical experience and help ease capacity constraints.

Dedicated planned care hub

Work is progressing on our £24million Planned Care Hub at PRH with the first beds expected to open to patients in autumn 2023. This purpose-built facility will consist of four theatres and a dedicated recovery area for elective care



The hub will enable us to deliver day case operations all year round which means that:

- Our patients will face **fewer delays** for treatment, improving outcomes
- We are not likely to **postpone procedures** due to winter and bed pressures

The hub is a key part of our long-term plans to deliver improvements in care for the population and create two thriving hospitals. It is expected to be fully complete in early 2024.





The Shrewsbury and
Telford Hospital
NHS Trust

What this means for the future



**Integrated
Care System**
Shropshire, Telford and Wrekin

Why is this an improved service?

- Most people who currently attend our A&E departments need urgent care for non-life-or-limb-threatening conditions and don't need a comprehensive emergency department or hospital admission.
- You will be seen more quickly by multidisciplinary teams who can care for a range of needs,
- The right staff will be available, with the right equipment to see, diagnose and treat you on the same day,
- There will be no delays due to people requiring emergency care



In an emergency...

- In a life or limb-saving emergency, you will be taken straight to Shrewsbury usually by ambulance “blue-light”
- There will be faster access to medical and surgical specialties, all on the same hospital site
- If you go to Telford as a “walk-in” but do need emergency, life or limb-saving treatment, expert staff will be able to support, stabilise and transfer you to the emergency site



A modern emergency department in Shrewsbury for everyone

- This is the agreed, most appropriate location for everyone arriving in an emergency from across Shropshire, Telford & Wrekin and mid Wales



Surgery, Anaesthetics and Cancer



A dedicated site for planned care with:

- ✓ Shorter waiting times
- ✓ Fewer cancellations
- ✓ Better experience
- ✓ Better recovery





The Shrewsbury and
Telford Hospital
NHS Trust

Latest developments



Integrated
Care System
Shropshire, Telford and Wrekin

Improving care for everyone

- We are working with Shropshire Council as part of the planning process for the Royal Shrewsbury Hospital site.
- Plans will improve care for everyone with modern, purpose built facilities that deliver a better experience for patients
- This supports our developing plans to ensure, if approved, we have full implementation by late 2026 and can provide improved care for everyone across Shropshire, Telford & Wrekin and mid Wales.
- We will work with staff, patients and communities to inform plans at every step of this improvement journey.





The Shrewsbury and
Telford Hospital
NHS Trust

How can we inform and engage local people?



**Integrated
Care System**
Shropshire, Telford and Wrekin

Get involved

- Local people can help us develop these plans in the best way for the future of local healthcare services
- We need to understand the perspectives of service users, carers, local communities and our staff to help us design a positive experience for everyone
- There will be a range of ways to get involved over the next few years
 - Targeted focus groups and workshops – help us to design services that better meet local needs
 - We are attending local community groups and meetings
 - Regular online meetings sharing the latest progress



Get involved

- **What information would your constituents like to know?**
 - **How can we support you to keep your constituents informed and involved?**
 - **What formats would you like to receive information in?**
- If you would like us to attend a meeting to update your group/organisation or to register for a focus group, email us on sath.engagement@nhs.net
 - Keep looking at our website for more information: www.sath.nhs.uk/about-us/hospitals-transformation-programme/
 - About Health event – 25 July
 - Focus groups in September

If you want to hear more about what's happening at our hospitals and how to get involved, email: sath.engagement@nhs.net





The Shrewsbury and
Telford Hospital
NHS Trust

Questions



Integrated
Care System
Shropshire, Telford and Wrekin