

# The Shrewsbury and Telford Hospital NHS Trust

Plans for the Royal Shrewsbury Hospital

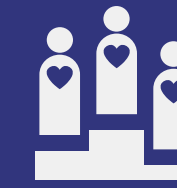


# The Shrewsbury and Telford Hospital NHS Trust

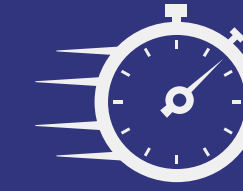
Planning Application for the Royal Shrewsbury Hospital



HIGHER QUALITY,  
SAFER CARE



IMPROVED  
OUTCOMES



BETTER  
ACCESS

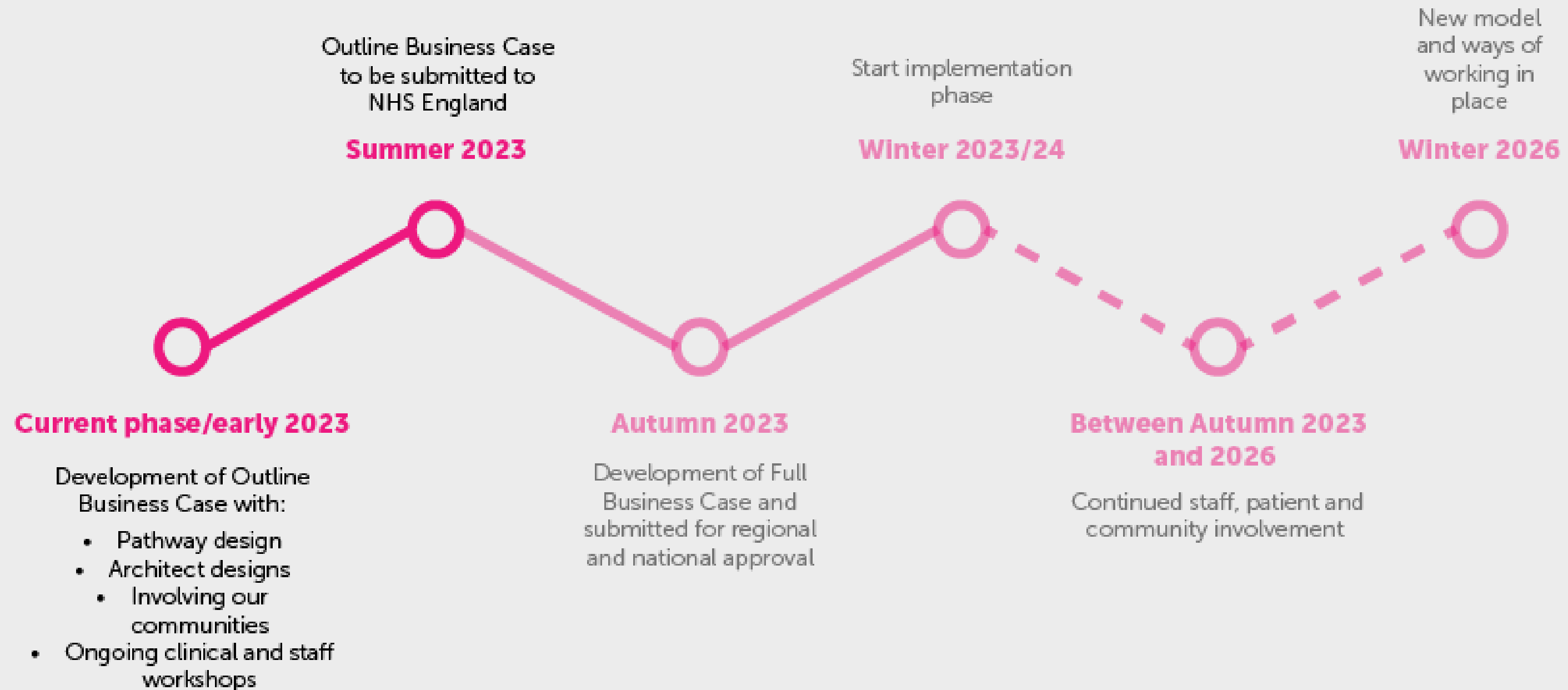


A GREAT PLACE  
TO WORK

## Agenda

- Introducing the team
- Royal Shrewsbury Hospital Proposals
- Design – appearance and materials
- Transport
- Sustainability
- Construction

# Where are we in the process?



# Where are we in the process?

- We've **worked with our lead clinicians** to add further detail into the clinical model to start to design the “**flow**” of **clinical services** (how our clinical teams will work and connect to each other).
- **On track** Outline Business Case with Government for review
- Seeking **planning permission** for building works at the Royal Shrewsbury Hospital
- **Preparations underway** to be ready for the implementation phase
- We are gathering feedback from engagement sessions to inform the development of our proposals. This **involvement will continue** and over the next few weeks, months and years there will be many opportunities for people to help us influence the physical environments and people's experience of our services.



# The clinically led changes will deliver...

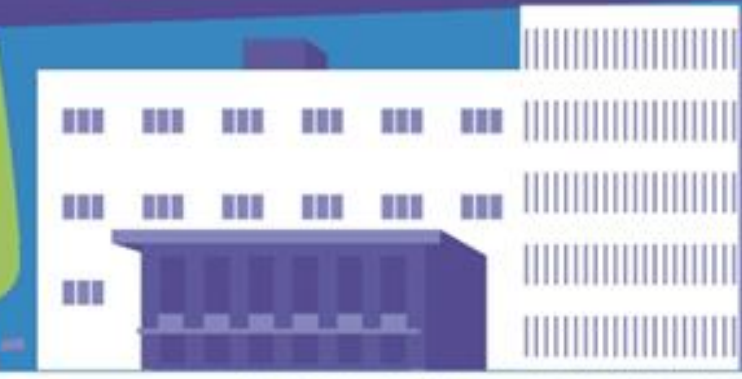
## TELFORD

SPECIALISING IN PLANNED CARE



## SHREWSBURY

SPECIALISING IN EMERGENCY CARE



## ONE HOSPITAL, TWO SITES

### BOTH SITES WILL PROVIDE

24-HOUR URGENT CARE CENTRES

DIAGNOSTICS

OUTPATIENT ADULT

OUTPATIENT CHILDREN

MIDWIFE-LED MATERNITY SERVICES

FRAIL AND ELDERLY CARE SERVICES

DIAGNOSTIC ENDOSCOPY

DAY CASE CHEMOTHERAPY

PLANNED SURGERY: PROCEDURES, DAYCARE SURGERY,  
NON-COMPLEX INPATIENT SURGERY

A&E LOCAL MODEL

INPATIENT MEDICAL CARE

GENERAL SURGERY

UROLOGY

ORTHOPAEDICS

GYNAECOLOGY

WEIGHT LOSS SURGERY

BREAST SURGERY

REHABILITATION

EMERGENCY DEPARTMENT

CRITICAL CARE UNIT

CONSULTANT-LED MATERNITY CARE

CHILDREN'S INPATIENT SERVICES

EMERGENCY SURGERY

COMPLEX PLANNED AND CHILDREN'S SURGERY

EMERGENCY MEDICINE INCLUDING CARDIOLOGY,  
STROKE, RESPIRATORY, AND ACUTE MEDICINE

CHILDREN'S ASSESSMENT UNIT

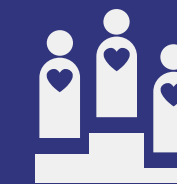
CONSULTANT NEONATAL SERVICES

RADIOTHERAPY AND INPATIENT CANCER CARE

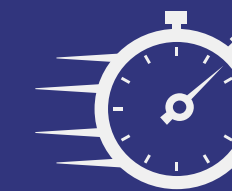
HEAD AND NECK INPATIENT SERVICES



HIGHER QUALITY,  
SAFER CARE



IMPROVED  
OUTCOMES



BETTER  
ACCESS



A GREAT PLACE  
TO WORK

## The Royal Shrewsbury Hospital proposals

The plans for RSH include approximately 30,000 sq. m of accommodation to provide:

- New 3,200 sq. m emergency department and emergency care facilities including an Urgent Treatment Centre and a Critical Care Unit
- Emergency Medicine including Acute Medicine
- Consultant-led Maternity Care
- 3,200 sq. m of new children's centre accommodation including children's inpatient and surgery services
- Gynaecological Services
- Consultant Neonatal Services
- New 1,500 sq m Oncology and Haematology ward
- New entrance, reception and hospitality offer as well as enhanced patient drop off facilities to cater across Shropshire, Telford and Wrekin, and mid-Wales

# The Shrewsbury and Telford Hospital NHS Trust

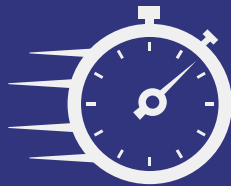
Planning Application for the Royal Shrewsbury Hospital



HIGHER QUALITY,  
SAFER CARE



IMPROVED  
OUTCOMES



BETTER  
ACCESS



A GREAT PLACE  
TO WORK

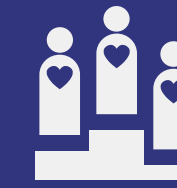


# The Shrewsbury and Telford Hospital NHS Trust

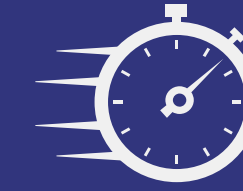
Planning Application for the Royal Shrewsbury Hospital



HIGHER QUALITY,  
SAFER CARE



IMPROVED  
OUTCOMES



BETTER  
ACCESS



A GREAT PLACE  
TO WORK

## Improving the hospital experience

- Areas of soft landscaping to soften the hospital's frontage and enhance the patient and visitor experience.
- Double height atrium which will connect the new and the old hospital with a lightweight structure.
- The café and waiting area will lead off from the atrium with pleasant views into the new courtyard.



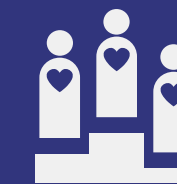


# The Shrewsbury and Telford Hospital NHS Trust

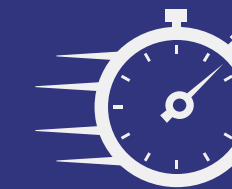
Planning Application for the Royal Shrewsbury Hospital



HIGHER QUALITY,  
SAFER CARE



IMPROVED  
OUTCOMES



BETTER  
ACCESS



A GREAT PLACE  
TO WORK

## The Royal Shrewsbury Hospital proposals

- Two new front doors
  - One to the Emergency Department
  - One to the new Main Entrance
- Large new reception and triage areas, with dedicated waiting for adults and children
- An expanded provision for 10 ambulances, with a protective canopy
- Relocated Helipad
- Emergency Department will include a new Critical Care unit

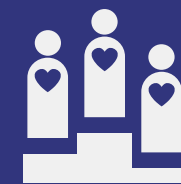


# The Shrewsbury and Telford Hospital NHS Trust

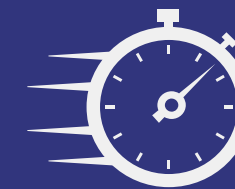
Planning Application for the Royal Shrewsbury Hospital



HIGHER QUALITY,  
SAFER CARE



IMPROVED  
OUTCOMES



BETTER  
ACCESS



A GREAT PLACE  
TO WORK

## Design – appearance and materials

- The building sits back from the boundaries of the site, minimising the impact on neighbours
- The existing hospital buildings are of a panellised concrete construction providing a clean, efficient, and effective new face for a modern hospital
- The windows are glazed between floor and ceiling to maximise daylight within the hospital building.

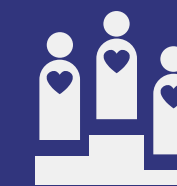


# The Shrewsbury and Telford Hospital NHS Trust

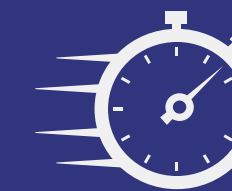
Planning Application for the Royal Shrewsbury Hospital



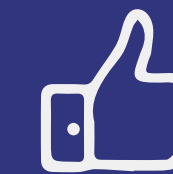
HIGHER QUALITY,  
SAFER CARE



IMPROVED  
OUTCOMES



BETTER  
ACCESS



A GREAT PLACE  
TO WORK

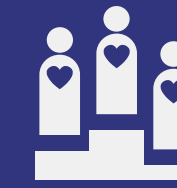
## Transport

- Comprehensive review of the transport facilities onsite undertaken
- Increase in overall parking
- The staff car parking provision reorganised
- Vehicle access points into the site will remain unchanged
- Relocated hospital entrance, which will now face the major public car park
- Increase in cycle parking

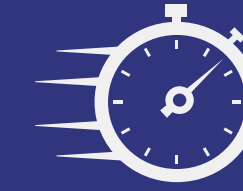




HIGHER QUALITY,  
SAFER CARE



IMPROVED  
OUTCOMES



BETTER  
ACCESS



A GREAT PLACE  
TO WORK

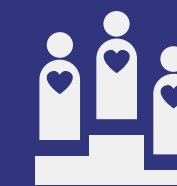
## Sustainability

- Aim to achieve BREEAM excellent, using sustainable building solutions such as solar panels
- The project aims to be Net Zero Ready which means the building will be capable of adapting to future sustainable technologies
- Proposals include neutral grassland, hedgerow mixed scrub and the introduction of shrub planting around the boundary of the building

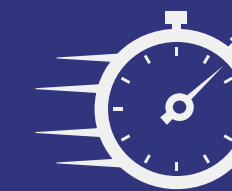




HIGHER QUALITY,  
SAFER CARE



IMPROVED  
OUTCOMES



BETTER  
ACCESS



A GREAT PLACE  
TO WORK

## Construction

- Some disruption to users and local residents in respect of noise, dust and vibrations
- Residents will be consulted on a construction management plan, which will be agreed with the council
- The development will be carried out in phases whilst maintaining the full operation of the hospital

An indicative timeline of building works subject to planning permission and other factors:

