

# Hospitals Transformation Programme

2 December 2025



HOSPITALS  
TRANSFORMATION  
PROGRAMME



HIGHER QUALITY,  
SAFER CARE



IMPROVED  
OUTCOMES



BETTER  
ACCESS



A GREAT PLACE  
TO WORK

# Latest developments

# Main build progress

- Construction continues at pace – IHP are expecting to complete the concrete frame for the final area before Christmas.
- Windows and external cladding are being installed, and internal fitting is underway in areas 1 and 2.
- Floors are currently being marked out using the latest robotics and technology.
- The structure will be weathertight by end of 2026.



External cladding



Stairwell and lift formation



Final concrete frame to complete



# Latest drone footage



**HOSPITALS  
TRANSFORMATION  
PROGRAMME**



HIGHER QUALITY,  
SAFER CARE



IMPROVED  
OUTCOMES



BETTER  
ACCESS



A GREAT PLACE  
TO WORK

# Improving our Emergency Department

- Refurbishment to create 8 additional majors' cubicles completed in September 2025
- IHP are now remodelling the new fit to sit to open in February 2026



# Design update

*\*Please note exact designs and colours are an indication only and some colours/shades may look different in person*

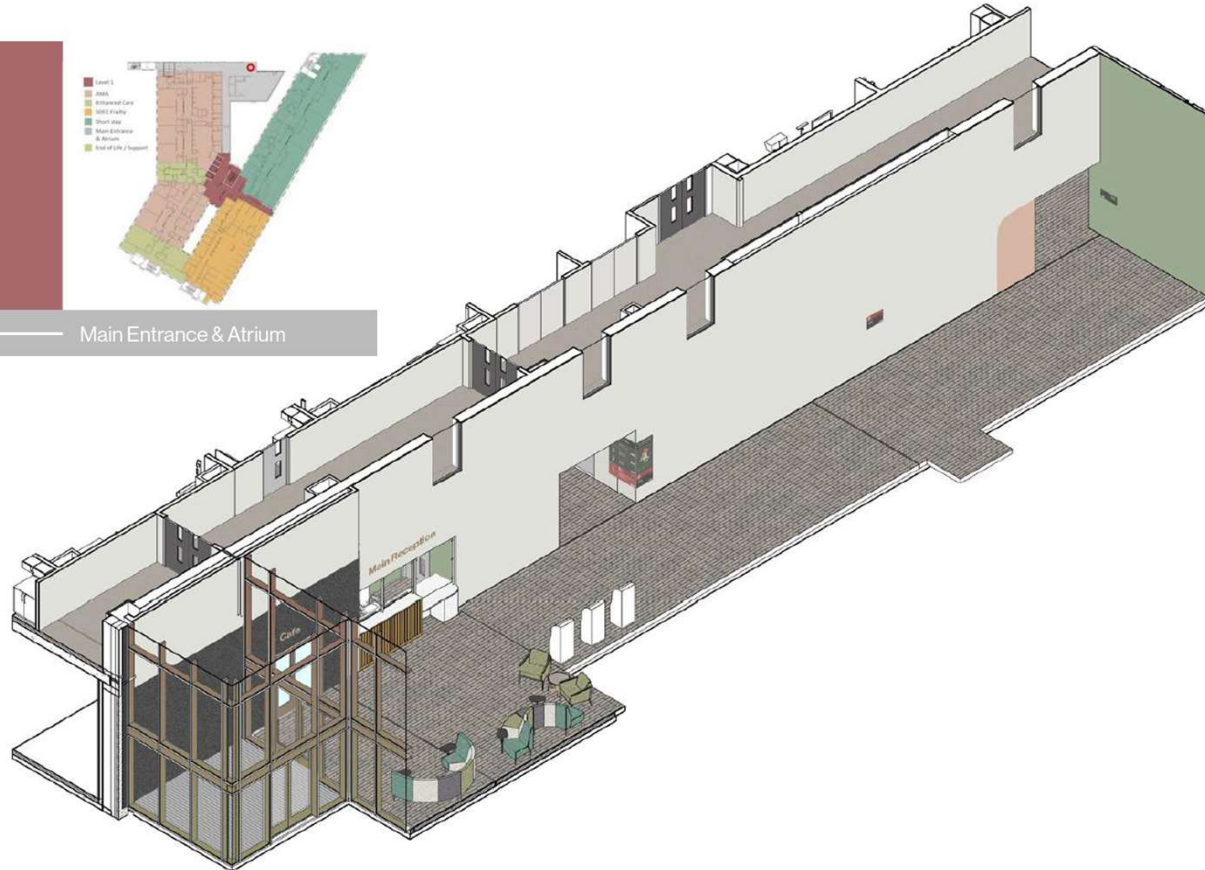


The Shrewsbury and  
Telford Hospital  
NHS Trust



Integrated  
Care System  
Shropshire, Telford and Wrekin

# Interior design - entrance foyer



## Proposed Finishes:



**Main Paint**  
BS4800  
Swansdown



**Upholstery**  
Vescom, Arrow,  
7055.05



**Feature Paint**  
RAL 6021



**Upholstery**  
Panaz, Cadet  
Contemporary,  
Amanthus Azure



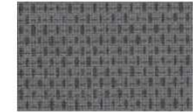
**Floor**  
Johnson Tiles,  
Minerals, Flint  
Grip finish



**Upholstery**  
Panaz Cadet  
Zest Moss



**Reception**  
Hi-Macs, Arctic  
White



**Upholstery**  
Vescom, Arrow,  
7055.22



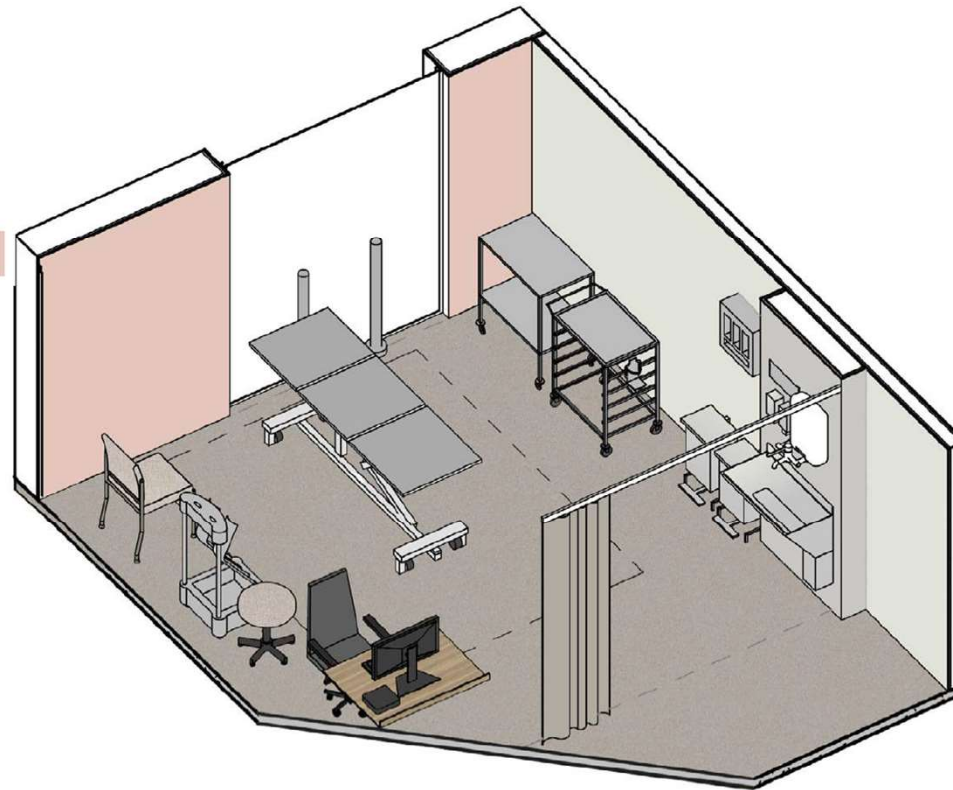
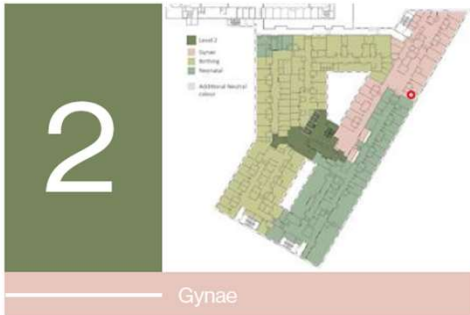
**Reception**  
Front Panels -  
Oak slats



**Ceiling**  
Rockfon Blanka  
planks with  
plasterboard  
surround



# Interior design – examination room



## Proposed Finishes:

**Floor**  
Tarkett, Eclipse Premium - Clay Grey 0988

**Patient Door**  
Greenlam, Sherwood Oak

**Patient Door Protection**  
Yeoman Shield, Mid Grey

**IPS Panels**  
Trovex Silver Lining

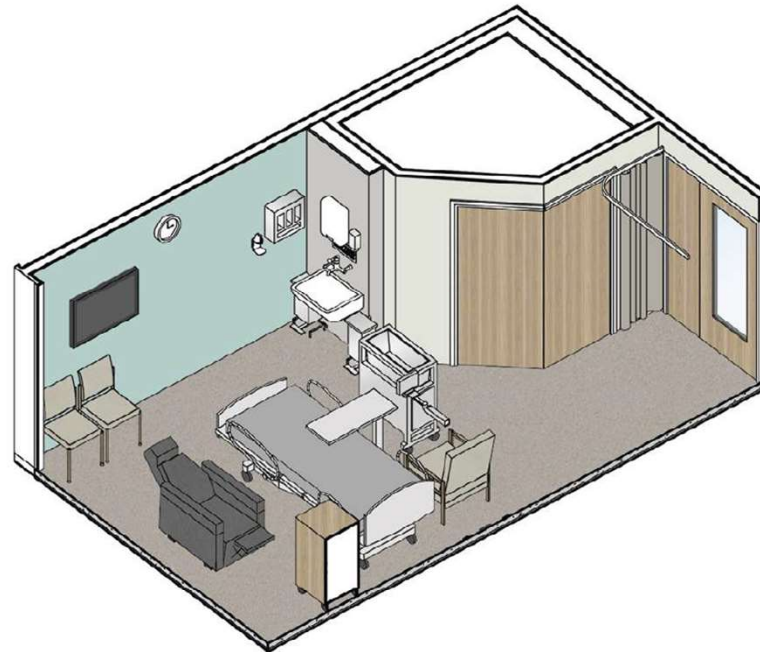
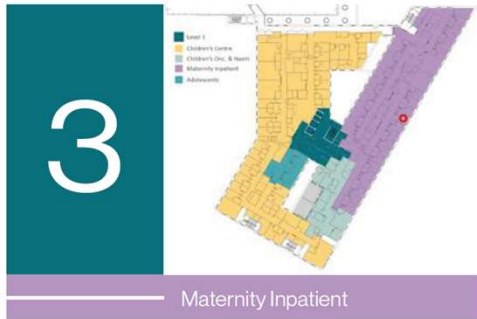
**Paint**  
BS4800 Swansdown

**Feature Paint**  
BS 4800 Shell

**Upholstery**  
Vescom, Creek, 7053.03

**Ceiling**  
Plasterboard Ceiling

# Interior design – maternity inpatient rooms



**Proposed Finishes:**



**Upholstery**  
Panaz, Cadet  
Zest, Platinum



**Ceiling**  
C02 Zentia  
Biobloc Acoustic



**Paint**  
BS4800  
Swansdown



**Door**  
Greenlam,  
Sherwood Oak



**Wardobes:**  
Egger, Natural  
Hickory



**Upholstery**  
Vescom, Arrow,  
7055.22



**Floor**  
Tarkett, Eclipse  
Premium - Clay  
Grey 0988



**Feature Paint**  
BS 4800  
Duckegg



**Door Protection**  
Yeoman Shield,  
Mid Grey



**IPS Panels**  
Trovex Silver  
Lining



**Blinds & curtains**  
Light grey colour  
antimicrobial  
material



HIGHER QUALITY,  
SAFER CARE



IMPROVED  
OUTCOMES



BETTER  
ACCESS



A GREAT PLACE  
TO WORK

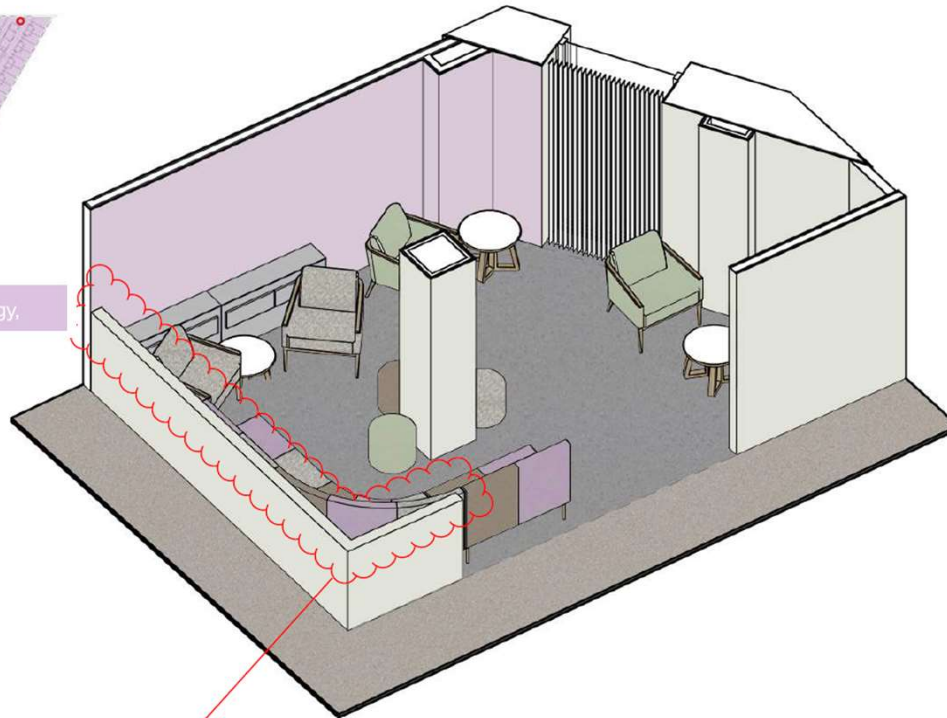
# Interior design – patient breakout, oncology



4



Oncology and Haematology,



Half height walls will have a contrast PVC capping for durability and cleaning purposes.

## Example Department Finishes:



**Upholstery**  
Vescom, Arches,  
7066.03



**Main Paint**  
BS4800  
Swansdown



**Upholstery**  
Panaz, Cadet  
Zest, Moss



**Feature Paint**  
BS 4800  
Mallow



**Upholstery**  
Panaz Cadet  
Contemporary,  
Amanthus Azure



**Circulation Floor**  
Tarkett, Eclipse  
Premium - Clay  
Grey 0988



**Upholstery**  
Panaz, Cadet  
Zest, Cobble



**Feature Floor**  
Tarkett, Eclipse  
Premium -  
Medium Grey  
0717



**Ceiling**  
Plasterboard  
Ceiling



HIGHER QUALITY,  
SAFER CARE



IMPROVED  
OUTCOMES

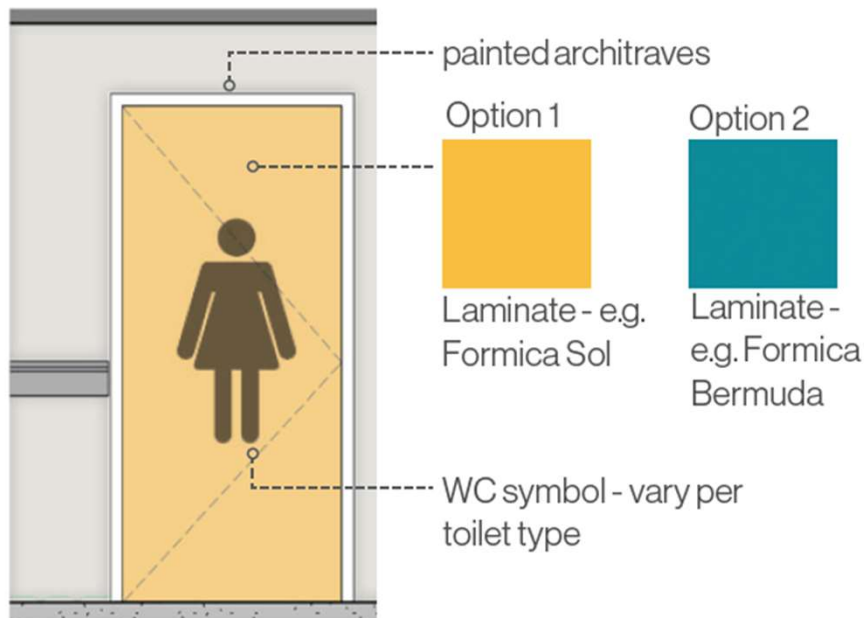


BETTER  
ACCESS

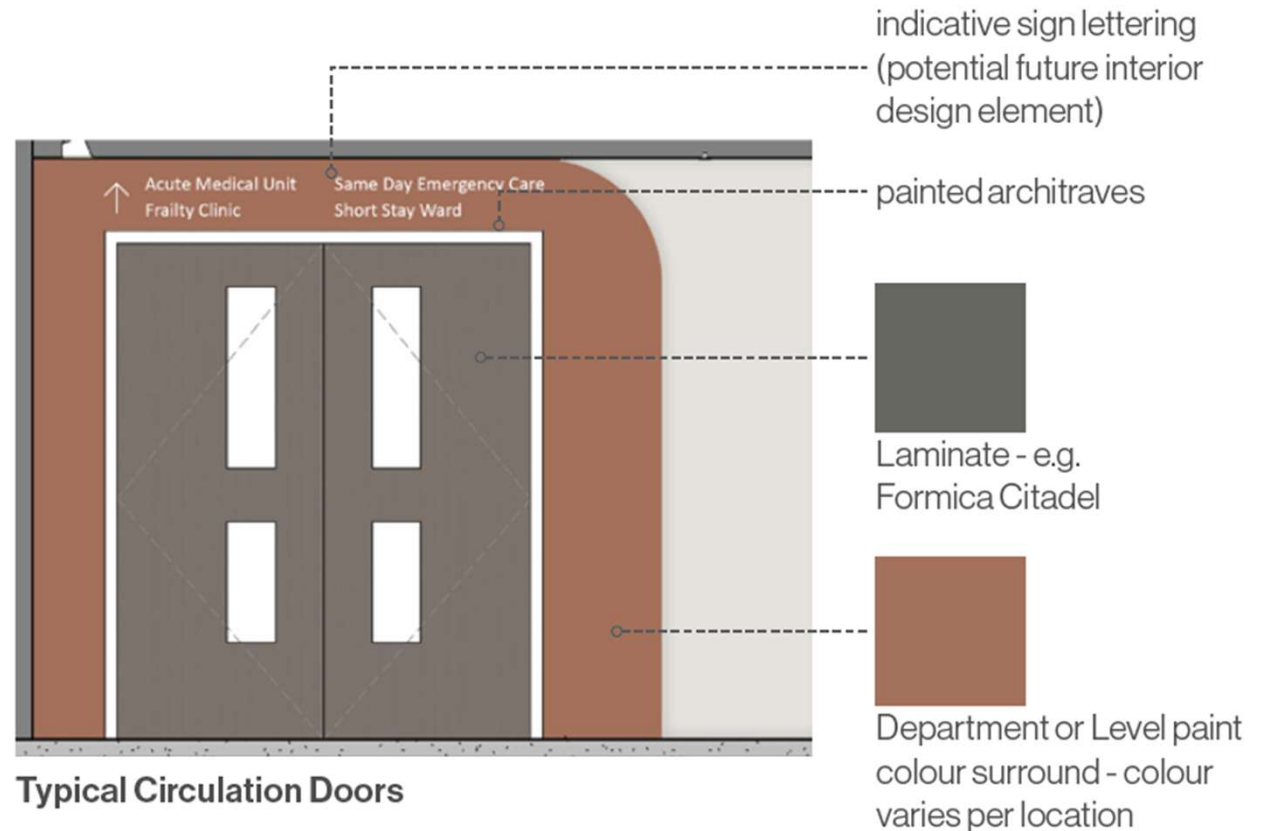


A GREAT PLACE  
TO WORK

# Interior design – internal doors



Typical WC doors - in corridors, for visitor/ public access



Typical Circulation Doors



# Charitable support

# Transforming PRH Hub

Since opening to the public on 8th September, the Transforming Princess Royal Hospital Hub has provided a source of information on future plans for PRH and how the public can help support them.

The hub is at the main entrance to PRH and is open Monday-Friday, 9:00am-4:30pm. The hub is staffed by representatives of SaTH Charity, Lingen Davies Cancer Support, the community engagement team, and volunteer team.

Since opening, the teams have been talking to numerous members of the public, staff, and volunteers every day. If you are in PRH please stop in and say hello.



# Sunflower Appeal update

In June this year Lingen Davies Cancer Support launched its biggest appeal to date - a **£5million Sunflower Appeal** to develop a Lingen Davies Cancer Centre at Telford's Princess Royal Hospital by 2029.

Combined with the existing services in the Royal Shrewsbury Hospital, this development will **double chemotherapy capacity across our region**, meaning patients can access the treatment they need, when they need, quicker.

Lingen Davies has **already raised over £260,000** for the Sunflower Appeal with no plans to slow fundraising efforts. The Founders scheme to recognise the first 100 people to donate £500 or more to the Sunflower Appeal has been very well supported.



# Other fundraising opportunities



## Respiratory Centre at PRH

Vacated clinical space in Princess Royal Hospital, as part of HTP, provides an opportunity to develop a Respiratory Day Unit – with support from charitable funding.

Our vision is to:

- Consolidate our respiratory specialists in one centre that will **serve our entire region**
- Provide **faster diagnostics and treatment** for respiratory conditions
- **Utilise existing, high-quality clinical space** in the current PRH W&C centre, which will be available once clinical moves have taken place

## Sky gardens in new building

We will have new outdoor space located on the third and top floor of the new building – one for children’s services and one for critical care and oncology.

Our vision is to:

- Provide a calm space for patients and their loved ones
- **Support mental and physical wellbeing** during what can be a very stressful and difficult time
- Work with our clinical services to ensure the outdoor spaces are functional and **meet the needs of our patients**
- Work with service users and partners to fundraise and bring these spaces to life over the next few years



# Engagement

# Focus groups

The MEC&SACC and W&C HTP focus groups have been merged into a single focus group, which will continue to be held quarterly. The dates will follow the MEC&SACC dates that are arranged through 2026, which are included here. The presentation, questions and answers, and actions, will continue to be added to the Trust website on the existing focus group page.

## HTP Quarterly Focus Group Dates

- Thursday 5th March 2026
- Tuesday 2nd June 2026
- Thursday 3rd September 2026
- Tuesday 1st December 2026

Find out more here, or scan the QR code:

<https://bit.ly/FocusGroups-HTP>



# Working with our communities

Throughout the programme we have engaged and work with our communities – they have had a direct impact into the programme and design of new healthcare facilities

Examples of this are:

- Redesigned main entrance into the hospital – now with separate entrances for ED/UTC and main hospital
- Distinct, yellow toilet doors in the new building to aid patients or visitors with dementia or visual impairment
- Second bereavement suite added to W&C floors and one flexible room if required – this includes soundproofing of these rooms
- Providing a sensory room within W&C floors for children with learning disabilities and families
- Dementia friendly clocks within rooms and wards
- Two mental health rooms now incorporated within the Emergency Department
- Lift display units for lone deaf/mute visitors – visual and audible instructions available through auto dialler
- Clear colour differentiation between floors, walls and doors for those living with dementia and with additional visual needs



# Engagement in the Community



We will continue to hold informational public drop-ins and deliver presentations to interested groups through 2025 and beyond, with dates now being added for 2026. The map shows visits already completed in 2025. We are always looking for opportunities to share information, if there is an event you think we should be attending, please email [sath.engagement@nhs.net](mailto:sath.engagement@nhs.net)

- HTP Focus Group with Rotary Club of the Severn – 5 December 2025, 11:00-13:00, Hybrid (presentation)
- Wellington Library – 8 January 2026, 10:00-12:00 (drop-in)
- Newport Library – 13 January 2026, 10:00-13:00 (drop-in)
- Whitchurch Library – 23 January 2026, 9:30-12:30 (drop-in)
- Oswestry Library – 28 January 2026, 9:30-12:30 (drop-in)
- Hospital Update – 28 January 2026, 11:00-12:00, MS Teams (presentation)
- Broseley Library – 6 February 2026, 10:00-13:00 (drop-in)
- Ludlow Library – 11 February 2026, 10:00-14:00 (drop-in)
- Hospital Update – 25 February 2026, 11:00-12:00, MS Teams (presentation)
- Bishop's Castle Library – 20 March 2026, 10:00-13:00 (drop-in)



**Next About Health (online presentation, open to all)**  
**27 January, 6.30pm-7.30pm**

**HOSPITALS  
TRANSFORMATION  
PROGRAMME**



# Additional engagement routes



Event & Date	Subject
Monthly Hospital Update – MS Teams (next one <b>28th January</b> )	Monthly Trust News Update including update on HTP
Monthly newsletter email update - sent to our 5000+ community members	Update from Public Participation team including HTP update and details on how to get involved
Quarterly About Health online updates (next one <b>27th January</b> )	One hour MS Teams online presentation for public from HTP team with Q&As
Quarterly Public Assurance Forum (next one January 2026) with representatives from organisations across health & social care in Shropshire, Telford & Wrekin & Mid Wales	Presentation from HTP team with Q&As
SaTH website and intranet	Webpages which support public engagement and Latest HTP meetings/feedback <a href="#">Public Participation - SaTH</a>

**HOSPITALS  
TRANSFORMATION  
PROGRAMME**



HIGHER QUALITY,  
SAFER CARE



IMPROVED  
OUTCOMES



BETTER  
ACCESS



A GREAT PLACE  
TO WORK

# Thank you for joining us...



- If you sign up to become a community member [sath.engagement@nhs.net](mailto:sath.engagement@nhs.net) we will keep you updated on how you can get involved and updated on the programme through our monthly update.
- Any further questions, please email: [sath.engagement@nhs.net](mailto:sath.engagement@nhs.net)

HOSPITALS  
TRANSFORMATION  
PROGRAMME



HIGHER QUALITY,  
SAFER CARE



IMPROVED  
OUTCOMES



BETTER  
ACCESS



A GREAT PLACE  
TO WORK